

# MB400 MFP Series

**OKI**<sup>®</sup>  
PRINTING SOLUTIONS



**Versatile black & white MFPs for small workgroups –  
with feature sets that meet your demands**

**MB460 MFP**  
**MB470 MFP**  
**MB480 MFP**



# With the MB400 MFP Series, you get all the functionality you need – with the feature sets you want.

## MB400 MFP Series Highlights:

- Professional, affordable solutions—print, copy, scan, and fax<sup>1</sup>
- Versatile, reliable and simple to operate
- Compact design, ideal for small office or small workgroup
- Internal Ethernet connectivity standard
- Fast black & white printing at up to 30 ppm, copying at up to 22 cpm<sup>2</sup>
- Duplex (2-sided) printing standard
- Digital copying with zoom and multi-copy features
- Color scanning with send-to functionality
- Dual access functionality enables unit to scan faxes into memory while sending or receiving faxes<sup>1</sup>
- 50-sheet automatic document feeder (ADF)
- Upgradable memory and paper capacity
- 1-Year limited warranty with Overnight Exchange<sup>3</sup>
- Live, toll-free technical support 24/7/365<sup>3</sup>

## Everything the small workgroup requires –

The MB400 MFP Series from OKI Printing Solutions combines black & white printing and copying, color/mono scanning, analog faxing<sup>1</sup>, and scan-to capabilities. These affordable, compact, networked MFPs let you produce professional-looking documents—with productivity-boosting speeds and budget-enhancing efficiency—and distribute them with ease through simple, user-friendly steps.

All three models produce the first printed page in less than 6 seconds, and deliver up to 30 clear, sharp prints per minute (ppm) and up to 22 copies per minute (cpm).<sup>2</sup> To help you control costs, all MB400 MFP models come with duplex (2-sided) printing standard, so you can save paper. And, for ongoing savings, their 2-piece consumables configuration lets you replace just a toner cartridge when you need to, instead of the toner cartridge *and* the image drum.

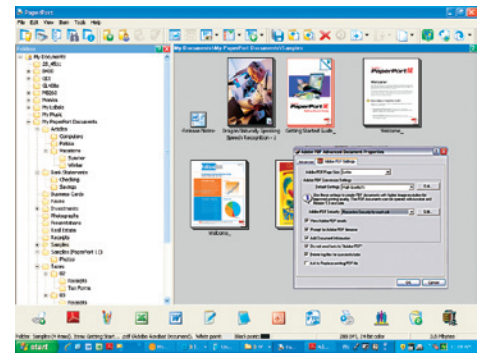
## Sharing files and documents is a snap –

Place your document on the flatbed platen or in the 50-sheet automatic document feeder (ADF) and scan it in black & white or color. Save and send the electronic version to a folder on your PC, the network or FTP site, as an attachment to an e-mail address, or as a fax<sup>1</sup>. The MB470 and MB480 models offer robust fax features, including dual access (scan faxes into memory while sending or receiving), one-touch dialing, distinctive ring, broadcast faxing, fax forwarding, and LDAP support.

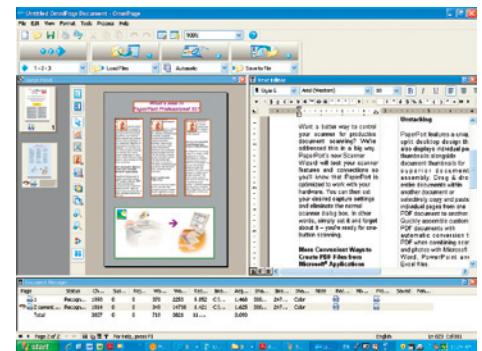
## Document management also made easy –

Among the utilities that come standard with the MB400 MFP Series are PaperPort® and OmniPage® by Nuance®. PaperPort is the industry-leading, award-winning software that will enable you to easily organize your scanned files, further enhancing your productivity. With its intuitive, thumbnail-based interface, PaperPort lets you save any scanned document in a PDF or JPEG format, and quickly make it available for archiving or sharing.

The feature-rich OmniPage converts scanned documents and PDF files into editable file formats used by applications such as Microsoft® Word, Excel®, Adobe® Acrobat® or HTML files.



Nuance's PaperPort® is an award-winning scanning and document management application that turns paper into digital content.



OmniPage® software converts paper into editable electronic documents (via OCR), saving you time and increasing your productivity.

**Feel like a customer again** – OKI Printing Solutions understands the needs of today's businesses. We listen to our end users and provide the solutions that can increase their performance while also improving their bottom line.

Your total satisfaction with our products and support is the driving force behind all we do. That's why we back the reliable MB400 MFP Series with a 1-Year limited warranty with Overnight Exchange and provide live tech support, toll-free 24/7/365, from experts located in North America.<sup>3</sup>



MB460 MFP

<sup>1</sup> Fax functionality with MB470 and MB480 models only.

<sup>2</sup> Published performance results based on laboratory testing. Individual results may vary.

<sup>3</sup> Available in the U.S. and Canada only.

# Take control of your office security and your bottom line with these compact desktop MFPs.

## Control of the way your MFP is used –

The MB400 MFP Series allows an administrator to grant or restrict access to individuals or groups of users. Simply assign individual PIN identification codes to your personnel, according to their privileges: print, copy, scan-to-email or network folders and, with the MB470 and MB480, fax transmission. They can unlock the restricted functions—with your permission—by entering their PIN codes into the machine's control panel.

## Improve your bottom line –

The MB400 MFP Series delivers cost-effective operation as well as an exceptional return on your investment.

Its outstanding reliability and long-lasting consumables help you control operating costs and improve productivity:

- Support one device rather than several
- Stock fewer replacement supplies
- Reduce user interventions

In addition, these MFPs are designed with 2-piece, cost-efficient consumables—including a high-capacity 12,000-page<sup>2</sup> toner cartridge. Your investment just keeps looking better and better.

**The MB400 MFP Series from OKI Printing Solutions. Convenience, cost efficiency and choice—all in one.**

## MB400 MFP Series at a Glance:



MB460 MFP Operator Panel



MB470/MB480 MFP Operator Panel



### MB460 MFP

- Print/Copy/Scan
- Print speeds up to 30 ppm and 22 cpm<sup>1</sup>
- 50-sheet ADF; single-sheet flatbed scanner input
- 250-sheet internal paper tray, standard
- 1-sheet manual paper feed for printing on paper weights up to 160 gsm
- Easy-to-use operator panel
- Optional 530-sheet 2nd paper tray
- Cost-efficient, easy-to-change 2-piece consumables
- 50,000-page monthly duty cycle
- Available with 3,500-page and 7,000-page toner cartridges



### MB470 MFP

Same as MB460 MFP plus...

- Full-featured fax functionality
- 50-sheet manual paper feed
- Dual access: scan faxes into memory while sending or receiving faxes
- PostScript® 3™ emulation
- Up to 1200 x 1200 dpi print resolution
- Linux OS compatibility (download from website)



### MB480 MFP

Same as MB470 MFP plus...

- 530-sheet internal paper tray, standard
- 70,000-page monthly duty cycle
- Also available with high-capacity 12,000-page toner cartridges<sup>2</sup>

<sup>1</sup> Published performance results based on laboratory testing. Individual results may vary.

<sup>2</sup> Estimated life based on ISO 19752.

# MB400 MFP Series

Specifications		
<b>Printer</b>	Print Speed	Up to 30 ppm <sup>1</sup>
	Time to First Page	As fast as 5.5 seconds <sup>1</sup>
	Warm-Up Time	As fast as 25 seconds
	Print Resolution	MB470/480: up to 1200 x 1200 dpi; MB460: up to 2400 x 600 dpi
	Processor Speed	297 MHz
	Duty Cycle	MB460/470: up to 50,000 pages/month; MB480: up to 70,000 pages/month
	Emulations	MB460 – PCL® 6, PCL 5e; IBM® ProPrinter® II; Epson® FX MB470/480 – PostScript® 3 <sup>3</sup> ; PCL® 6, PCL 5e; IBM ProPrinter II; Epson FX
	Operating Systems	Windows Vista® (32/64-bit), XP (32/64-bit), Server 2008 (32/64-bit), Server 2003 (32/64-bit), Win2000 (32-bit); Mac® OS 10.3.9 or higher (print only); Linux (MB470/480 only)
	Connectivity	USB 2.0 Hi-speed; IEEE1284 Parallel; 10/100 Base-TX internal Ethernet print server
	<b>Copier</b>	Copy Speed
Time to First Copy		As fast as 14 seconds <sup>1</sup>
Copy Resolution		Up to 600 x 600 dpi
Copy Scaling		25% to 400%
Copy Quantity Selection		1–99
Duplex Copying		Manual
<b>Scanner</b>	Scan Type	Color, Mono and Gray Scale
	Document Input	Flatbed scanner; 50-sheet Automatic Document Feeder (ADF)
	Scan Speed	As fast as 3 sec./pg. from flatbed; 2.2 sec./pg. from Auto Document Feeder (ADF)
	Scan Resolution	Up to 4800 x 4800 dpi (selectable on driver)
	Scan-to	PC – create electronic files from hard-copy originals with Nuance® PaperPort® SE 11 and scan to Folder, E-mail (with LDAP support), Network folder, FTP/CIFS server, and fax (MB470/480 only); TWAIN, WIA
	Color Scan Depth	48-bit color
<b>Utilities</b>	Document Management	Nuance PaperPort SE 11 standard
	OCR	Nuance OmniPage® 4SE standard
	Device Management	MFP Setup Tool (via USB or Network I/F); enables access to features and settings
	Print/Job Management	PrintSuperVision and Job Accounting Software
<b>Address Book</b>	E-Mail and Fax	Stores 100 addresses
	Fax Modem	33.6 Kbps SuperG3; 3 sec./pg. transmission <sup>2</sup>
	Connectivity	RJ11 x 2 lines (Fax/Tel)
	Fax Resolution	Up to 400 x 200 dpi
	One-Touch Dials	Up to 10 locations
	Speed Dials	Up to 100 locations
	Broadcast Dials	Up to 100 locations using pre-programmed numbers
	Fax Memory	4 MB (200 pages) <sup>2</sup>
	Functions	Transmit: feeder, memory, manual; Auto redial; Receive: auto, memory, manual; Dual access; Delayed transmit; Broadcast; Auto Fax/Tel switch; Distinctive ring detection; Time/Date stamp
	<b>Memory</b>	System Memory
<b>Paper Handling</b>	Standard Capacity (with MPF)	MB460: 250 + 1 sheets; MB470: 250 + 50 sheets; MB480: 530 + 50 sheets
	Max Capacity (with options)	MB460: 781 sheets; MB470: 830 sheets; MB480: 1,110 sheets
	Auto Document Feeder (ADF)	50 sheets
	Printer Paper Sizes	Letter, Legal-13, Legal-13.5, Legal-14, Executive, Statement, A4, A5, A6, B5; Envelopes: C5, C6, DL, Com-9, Com-10, Monarch
	Paper Weight	Main tray and optional 530-sheet 2nd Tray: 17–32 lb. bond (64–120 gsm); Manual Paper Feed (MPF): 20 lb. bond–90 lb. index (75–160 gsm); Duplex and ADF: 16–28 lb. bond (60–105 gsm)
	Duplex (2-Sided) Printing	Standard
<b>Security</b>	Paper Output	Up to 150 sheets, face down
	Access Control	PIN protection (99 accounts)
<b>Environmental</b>	Size (WxDxH)	MB460/470: 17.6" x 17.0" x 19.7" (44.7 cm x 43.2 cm x 50.0 cm) MB480: 17.6" x 17.0" x 20.8" (44.7 cm x 43.2 cm x 52.9 cm)
	Weight	MB460: 37.4 lb. (17 kg); MB470: 40.8 lb. (18.5 kg); MB480: 41.9 lb. (19 kg)
	Power Consumption	Power Save: 10W; Standby: 100W; Normal: 500W; Max: 800W
	ENERGY STAR® Compliance	Yes
<b>Warranty</b>	Acoustic Noise	Operating (Printing/ Scanning/Copying) 56 dB(A); Standby 32 dB(A)
	System	1-Year Overnight Exchange <sup>3</sup>

Ordering Information		
<b>Description</b>	<b>Part Numbers</b>	
MB460 MFP (120V)	62433101	
MB460 MFP (220V)	62433102	
MB470 MFP (120V)	62433201	
MB470 MFP (220V)	62433202	
MB480 MFP (120V)	62433301	
MB480 MFP (220V)	62433302	
<b>Options</b>		
530-Sheet 2nd Paper Tray	43990706	
64 MB Memory	70057302	
256 MB Memory	70057401	
<b>Supplies</b>		
Toner Cartridge	3,500 pg. <sup>4</sup>	43979101
Toner Cartridge	7,000 pg. <sup>4</sup>	43979201
Toner Cartridge (MB480 only)	12,000 pg. <sup>4</sup>	43979215
Image Drum	25,000 pg. <sup>5</sup>	43979001
<b>OKIcare® Overnight Exchange Warranties<sup>3</sup></b>		
	<b>U.S.</b>	<b>Canada</b>
MB400 MFP Series 2-Year Warranty	38012102	38012112
MB400 MFP Series 3-Year Warranty	38012103	38012113
<b>OKIcare On-Site Warranties<sup>3</sup></b>		
	<b>U.S.</b>	<b>Canada</b>
MB400 MFP Series Upgrade to On-Site Warranty	38012201	38012211
MB400 MFP Series 2-Year On-Site Warranty	38012202	38012222
MB400 MFP Series 3-Year On-Site Warranty	38012203	38012213

<sup>1</sup> Published performance results based on laboratory testing. Individual results may vary.

<sup>2</sup> Based on ITU-T Test Chart #1.

<sup>3</sup> Available in the U.S. and Canada only.

<sup>4</sup> Estimated life, based on ISO 19752. All models ship with 1,500-page "starter" toner cartridges.

<sup>5</sup> Estimated life, continuous printing (may vary depending on the number of printed pages per job).

For more information on MB400 MFP Series Multifunction Products and supplies—including OKIcare warranty extensions—please call us at **1.800.OKI.DATA (800.654.3282)**<sup>3</sup> or visit our website: [www.okiprintingsolutions.com/us](http://www.okiprintingsolutions.com/us)



## OKI DATA AMERICAS, INC.

**USA**  
2000 BISHOPS GATE BLVD.  
MOUNT LAUREL, NJ 08054-4620  
TEL: 800.OKI.DATA (800.654.3282)  
FAX: 856.222.5320

**CANADA**  
2735 MATHESON BLVD. EAST  
MISSISSAUGA, ONTARIO L4W 4M8  
TEL: 905.238.4250  
FAX: 905.238.4421

**LATIN AMÉRICA**  
2000 BISHOPS GATE BLVD.  
MOUNT LAUREL, NJ 08054-4620  
TEL: 856.231.0002  
FAX: 856.222.5071

**OKI DATA DE MÉXICO, S.A. DE C.V.**  
MARIANO ESCOBEDO, 748 8<sup>º</sup> PISO  
COL. NUEVA ANZURES C.P. 11590  
MÉXICO, D.F.  
TEL: 55.5263.8780  
FAX: 55.5250.3501

**OKI DATA DO BRASIL INFORMÁTICA LTDA.**  
AV. ALFREDO EGÍDIO DE SOUZA ARANHA, 100  
BLOCO C – 4<sup>º</sup> ANDAR  
04726-170 – SÃO PAULO – SP – BRASIL  
TEL: 11.3444.3500  
FAX: 11.3444.3502

[WWW.OKIPRINTINGSOLUTIONS.COM](http://WWW.OKIPRINTINGSOLUTIONS.COM)